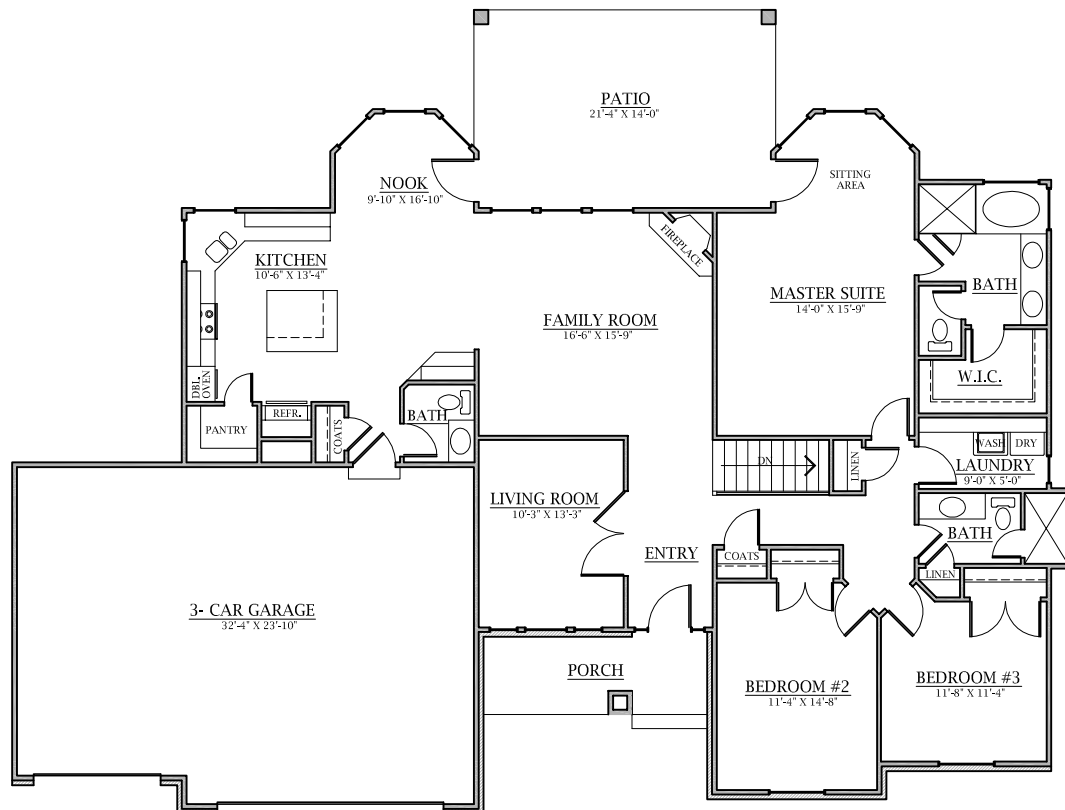


BUILDING DYNAMICS

PLAN 2052



Plan 2052

Main Floor	2030	Sq. Ft.
Basement: Finished	22	Sq. Ft.
Unfinished	2052	Sq. Ft.
Total: Finished	2052	Sq. Ft.
Area	4104	Sq. Ft.
Garage	789	Sq. Ft.

Adjustments can be made on all Building Dynamics plans

Overall Dimensions:

75'-0" Wide X 49'-10" Deep