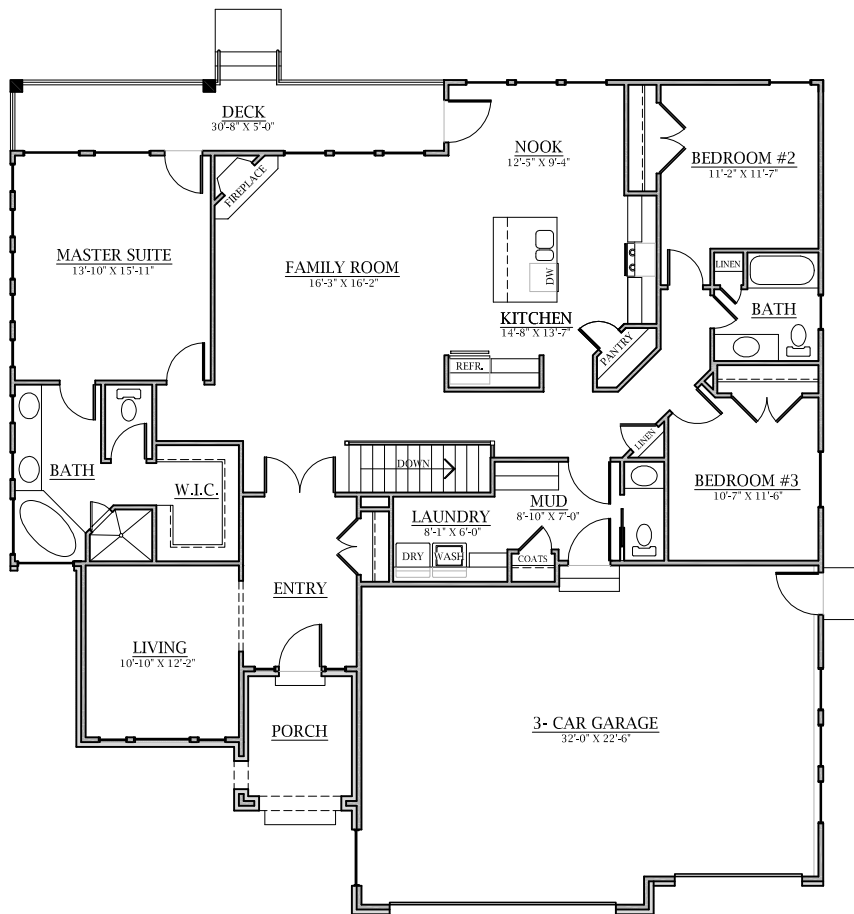


BUILDING DYNAMICS

PLAN 2612



Plan 2612

Main Floor	2062	Sq. Ft.
Basement: Finished	550	Sq. Ft.
Unfinished	1491	Sq. Ft.
Total: Finished Area	2612	Sq. Ft.
Garage	772	Sq. Ft.

Adjustments can be made on all Building Dynamics plans

Overall Dimensions:

57'-6" Wide X 59'-0" Deep