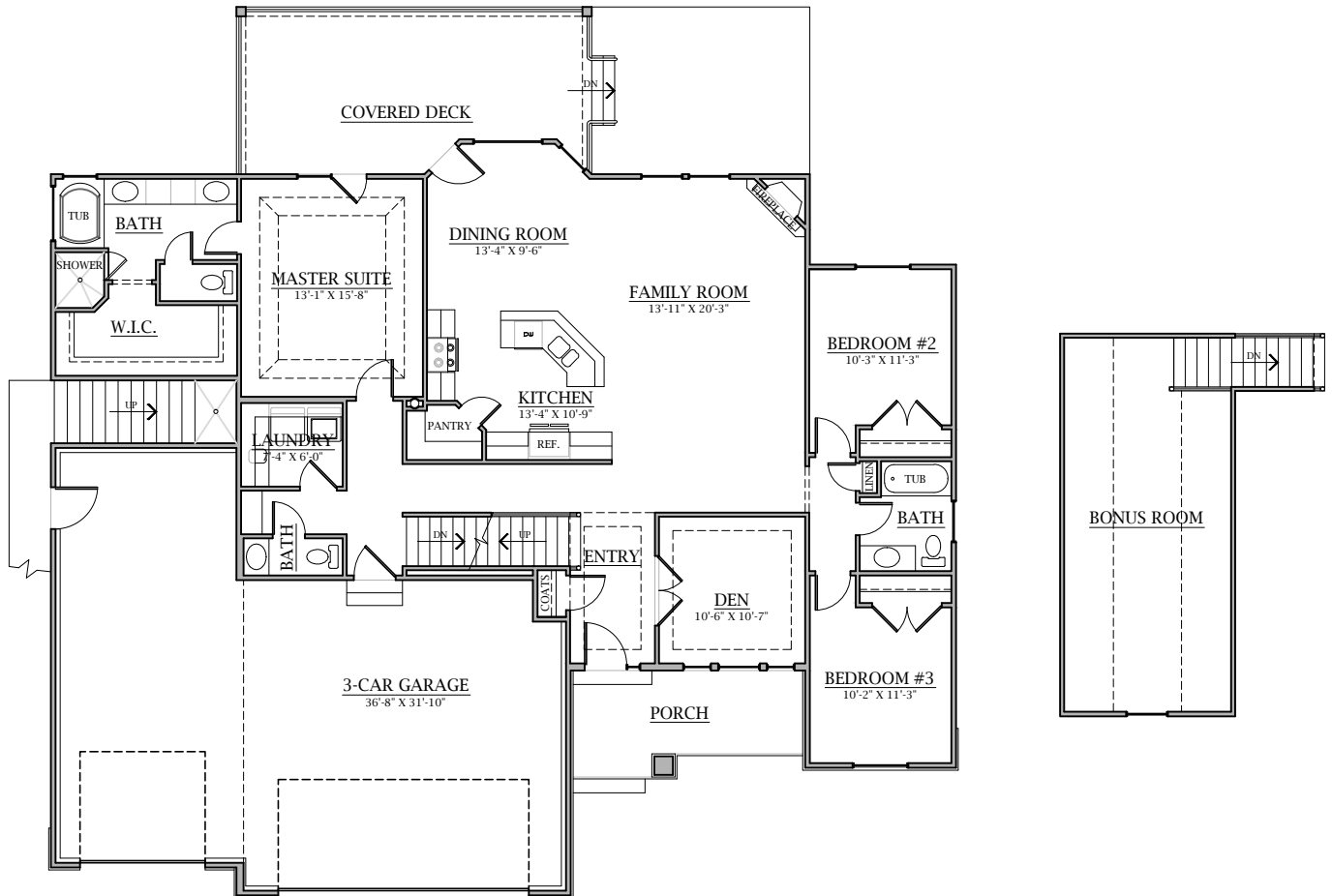


BUILDING DYNAMICS

PLAN 2353



Plan 2353

Main Floor:		1925	Sq. Ft.
Upper Floor:		369	Sq. Ft.
Basement:	Finished	59	Sq. Ft.
	Unfinished	1845	Sq. Ft.
Total:	Finished	2353	Sq. Ft.
	Area	4198	Sq. Ft.
Garage:		941	Sq. Ft.

Adjustments can be made on all Building Dynamics plans

Overall Dimensions:

65'-4" Wide X 54'-6" Deep