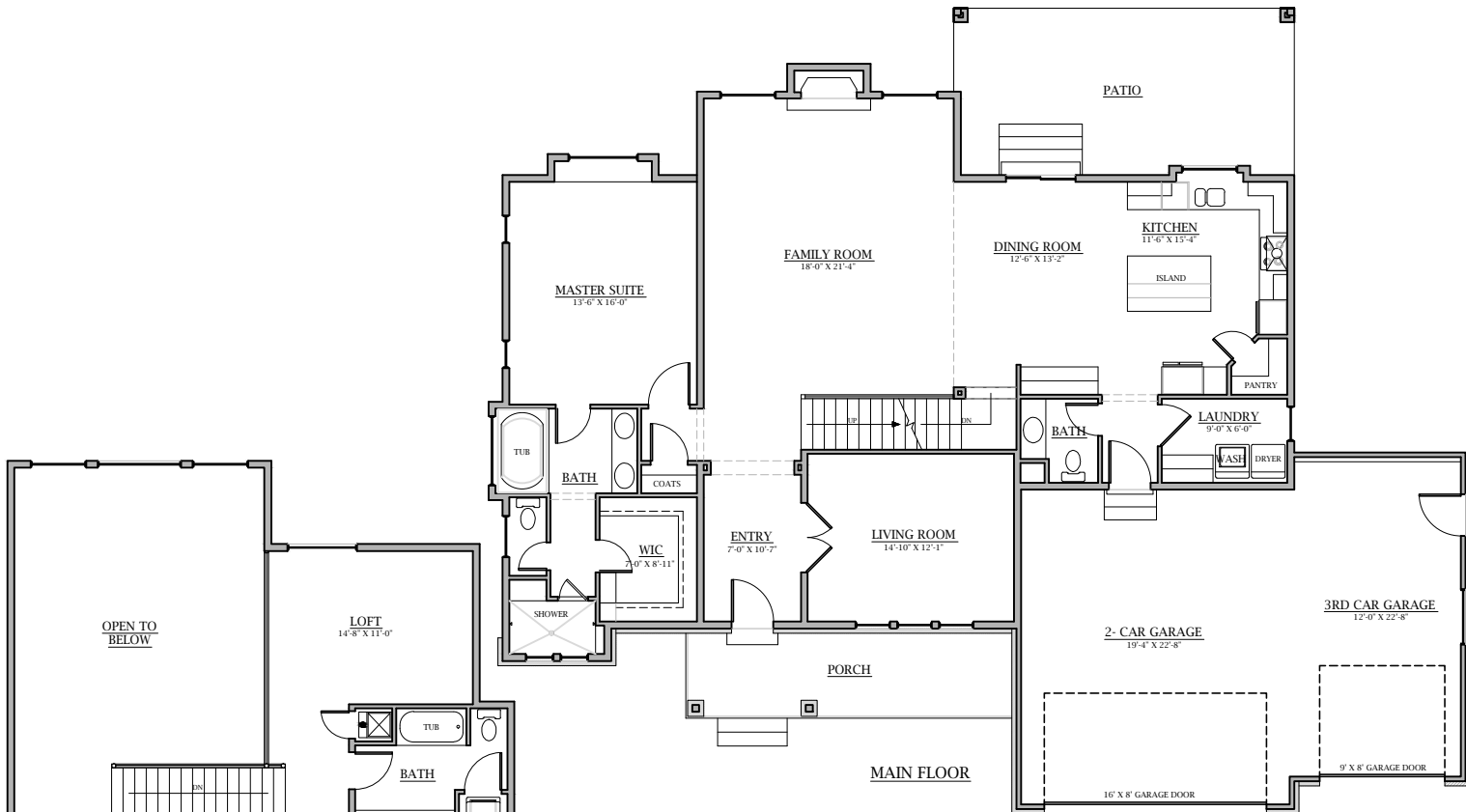


BUILDING DYNAMICS

PLAN 2333 B



Plan 2333 B

Main Floor:	1680	Sq. Ft.	
Upper Floor:	653	Sq. Ft.	
Basement:	Finished	26	Sq. Ft.
	Unfinished	1754	Sq. Ft.
Total:	Finished	2359	Sq. Ft.
	Area	4113	Sq. Ft.
Garage:	772	Sq. Ft.	

Adjustments can be made on all Building Dynamics plans

Overall Dimensions:

70'-8" Wide X 58'-0" Deep