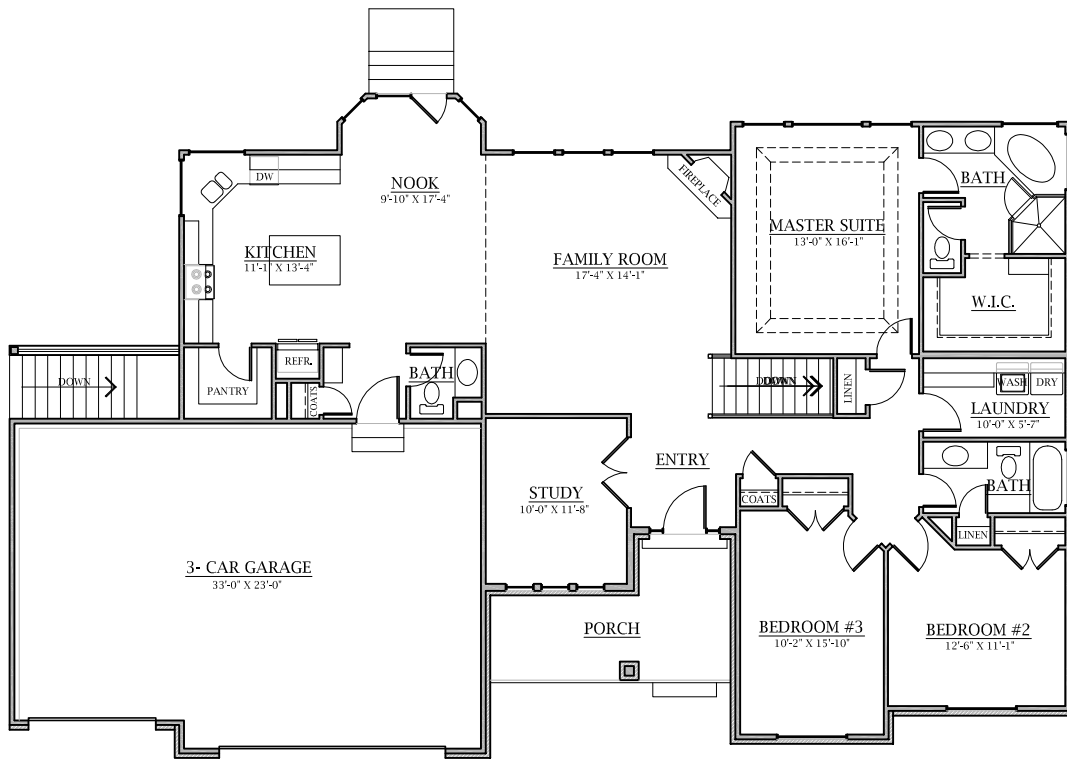


BUILDING DYNAMICS

PLAN 2035



MAIN FLOOR

Plan 2035

Main Floor	2012	Sq. Ft.
Basement: Finished	23	Sq. Ft.
Unfinished	2111	Sq. Ft.
Total: Finished Area	2035	Sq. Ft.
	4146	Sq. Ft.
Garage	777	Sq. Ft.

Adjustments can be made on all Building Dynamics plans

Overall Dimensions:

75'-0" Wide X 47'-0" Deep