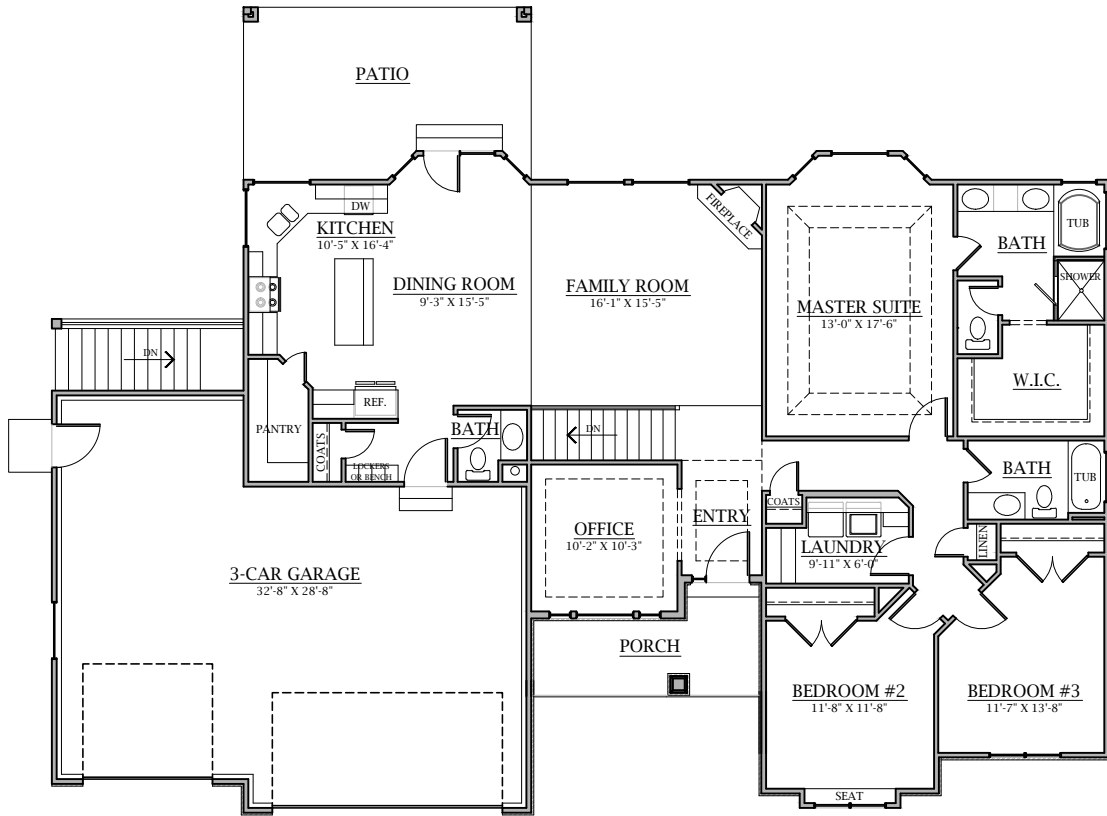


BUILDING DYNAMICS

PLAN 1955



Plan 1955

Main Floor:		1938	Sq. Ft.
Basement:	Finished	17	Sq. Ft.
	Unfinished	1994	Sq. Ft.
Total:	Finished	1955	Sq. Ft.
	Area	3949	Sq. Ft.
Garage:		815	Sq. Ft.

Adjustments can be made on all Building Dynamics plans

Overall Dimensions:

73'-6" Wide X 46'-2" Deep