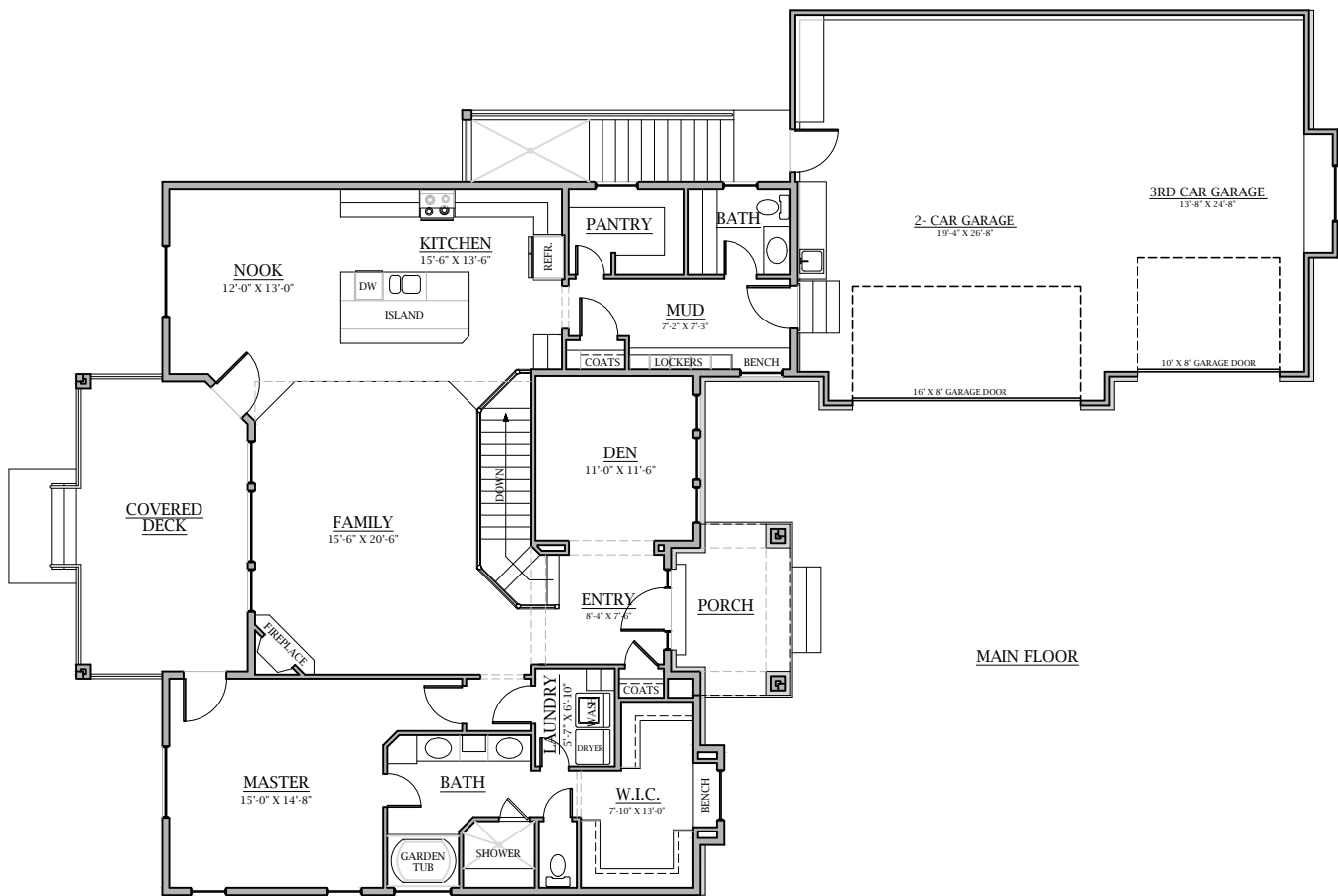


BUILDING DYNAMICS

PLAN 1867



Plan 1867

Main Floor:	1867 Sq. Ft.
Basement: Finished	20 Sq. Ft.
Unfinished	1830 Sq. Ft.
Opt. Cold Storage	96 Sq. Ft.
Total: Finished	1887 Sq. Ft.
Area	3717 Sq. Ft.
Area w/ Opt. Cold Storage	3813 Sq. Ft.
Garage	988 Sq. Ft.

Adjustments can be made on all Building Dynamics plans

Overall Dimensions:

62'-0" Wide X 88'-4" Deep